




*Winners of Advanced Packaging, Surface Mount and Global SMT Vision Awards (2003 – 2009)*

## **MiniTouch MTW-1 Semi Automatic Wafer Bumper**



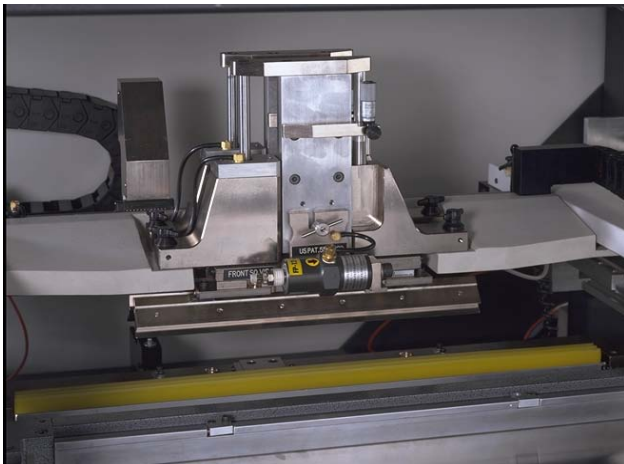
### **General Description**

The MiniTouch semi-automatic wafer bumper offers advanced technological features and combines them with unprecedented ease of operation.

A Windows™ Professional based programming simplifies every aspect of set-up. A customized windows based system allows either first time or experienced operators to use the printer's full capabilities in just a short time. Resistive touchscreen technology is also employed to reduce liabilities associated with keyboards and trackball operations.

Milara has been setting the industry standard for printers by combining highly skilled technical expertise with ingenious product design and adding the most important element of all - customer input.

- Patented and proven vibration squeegee technology
- Simplified control panel with Windows™ Professional
- Fast, easy set-up and alignment



#### **(Vibration Squeegee Technology shown above)**

- Near zero registration error
- Advanced vacuum monitoring system with auto abort sequence
- Integrated resistive touchscreen monitor
- Available for 150 and 200 mm wafer size capable
- High precision/low volume production
- Rugged industrial control components for high reliability

The MTW-1 is engineered to achieve the highest levels of precision and consistency in paste deposition. A self-diagnostic program for instant trouble shooting is built in to ensure maximum productivity.

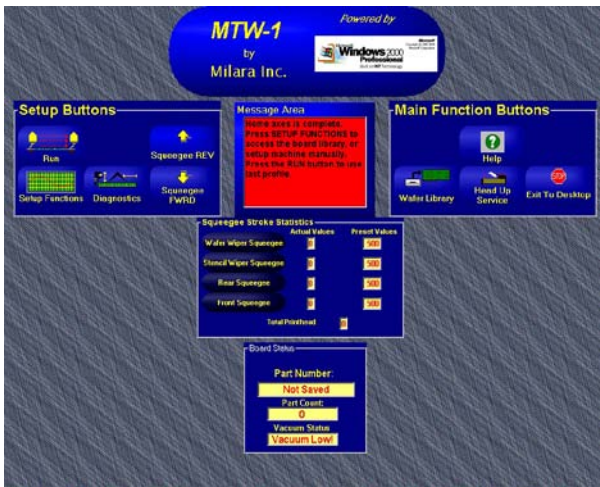
Milara has been setting the industry standard for printers by combining highly skilled technical expertise with ingenious product design and adding the most important element of all - customer input.

- Semi-automatic stencil/screen printer
- Simplified control panel with Windows™ Professional
- Fast, easy set-up and alignment
- High precision/low volume prototyping
- High precision/high volume production
- Uniquely designed wafer load / unload chuck
- Virtually maintenance free



### Specifications

Print Area: .....	14" x 16" (355mm x 406mm)
Wafer Frame:.....	8" x 10" up to 20" x 20" (203mm x 254mm up to 508mm x 508mm)
Registration Repeatability: .....	+/- 0.0005" (+/- 12µm)
Board Size: .....	Up to 16" x 16" (406mm x 406mm)
"X" "Y" Adjustment: .....	+/- 0.75" (+/- 19mm)
Theta Adjustment: .....	+/- 10 degrees
Squeegee Head Print Stroke:	1" to 17" (25mm to 432mm)
Squeegee Head Speed: .....	0.1" to 9.9" per second (2.5 to 250mm per sec.)
Wafer Height Adjustment: .....	0.50" range (12.7mm range)
Squeegee Pressure: .....	1 to 65 pounds (0.50 to 29 Kilos)
Dimensions: .....	65" l x 44" w x 52" h 165cm x 111.8cm x 132.1cm
Shipping Weight: .....	600 pounds (272 kilos)



### Standard Features

- Print area 14" x 16"
- Servo shuttle style X, Y and Theta carriage
- X, Y, and Theta adjustments
- Programmable squeegee speed and positions
- Integrated resistive touchscreen for easy setup
- Last wafer recall and unlimited wafer profile storage
- Step through programming for new operators
- Advanced programming for experienced operators
- Self-diagnostic system to provide instant problem solving
- Closed loop, microprocessor controlled squeegee pressure
- Bottom side stencil wiper (manual clean)
- Top side wafer wiper (final clean wipe)



### Customers Come First at Milara

Milara products and accessories offer ease of operation and a remarkably short learning curve. Once a system is installed, the Milara technical support team is committed to doing whatever is necessary to help our clients keep the MiniTouch operating at peak efficiency.

4 Marc Road, Medway, MA 02053 USA  
 Phone 508-533-5322 Fax 508-533-8686  
 Website: [www.milarasmt.com](http://www.milarasmt.com)