

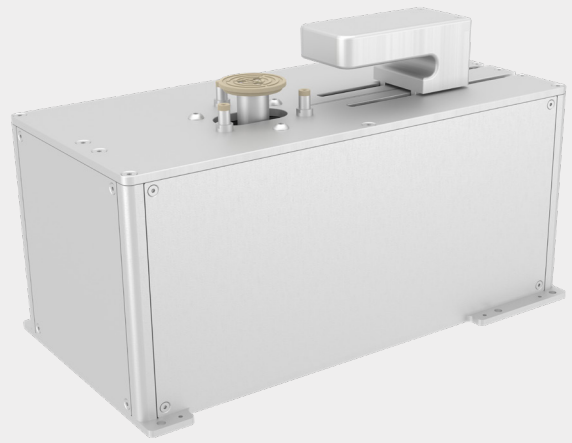
LEADING THE WAY OF INNOVATION

Milara Smart Prealigners

Full Line-up

FEATURES

- Industry leading alignment precision using a high-resolution encoder
- Self-calibration and self-diagnostic capabilities
- RGB + IR light sources – allowing easier and faster edge detection for semi-transparent and glass carriers
- Moving lighthouse allows alignment of square and round substrates with non-standard sizes
- Nitrogen purge option for maximum cleanliness
- Drop-in replacement for common brands in the industry
- Adaptive light source allows easier and faster edge detection for semi-transparent and glass



- Support non-standard size wafers (e.g. 108 mm, 208 mm etc.)
- Square substrates support
- Flat and Notch compatibility
- Supported Wafer Opacity - Transparent, Semi-Transparent, Opaque
- Angular Accuracy: 0.015°
- Centering Accuracy: 20 μ m | 0.0007"
- Initial Offset Limit: 10 mm | 0.39"
- Alignment time: <4 sec
- Handling: Vacuum or Gravity
- Servo Axes: Four

SPECIFICATIONS

SPECIFICATIONS

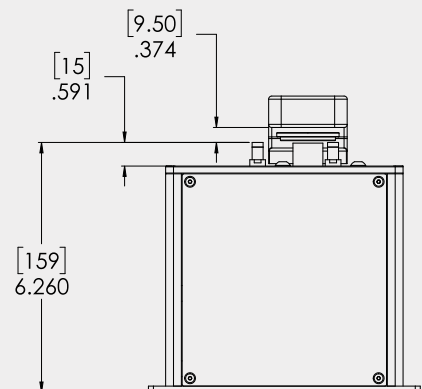
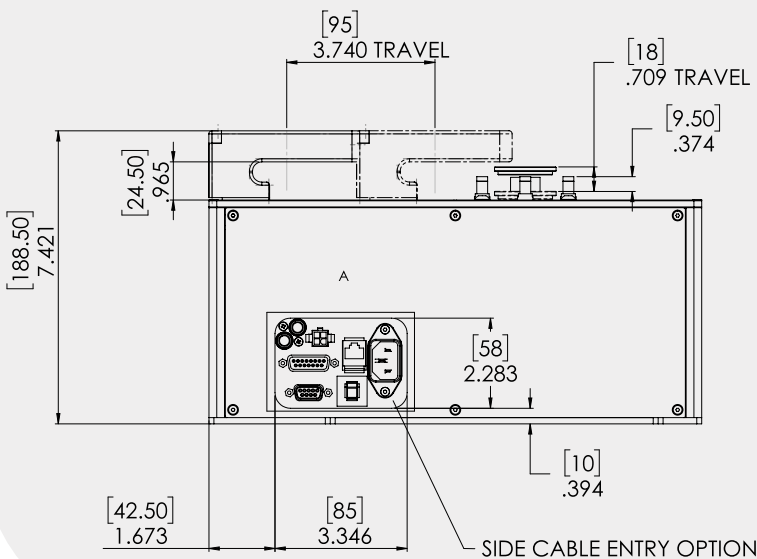
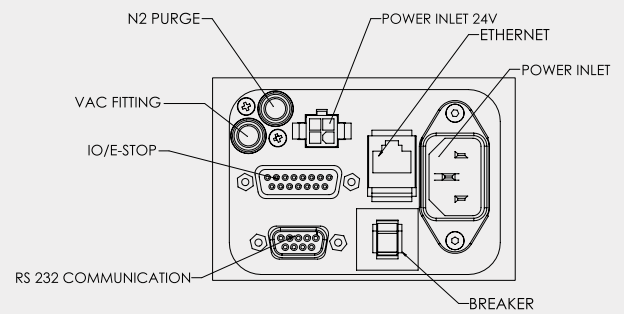
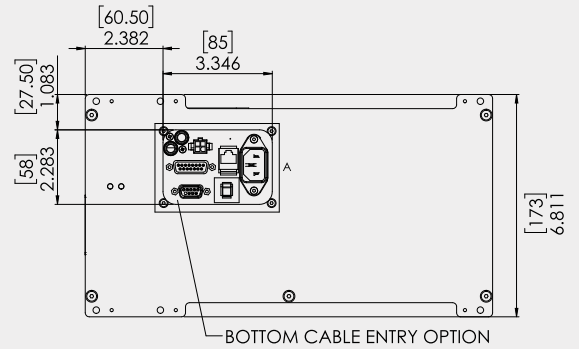
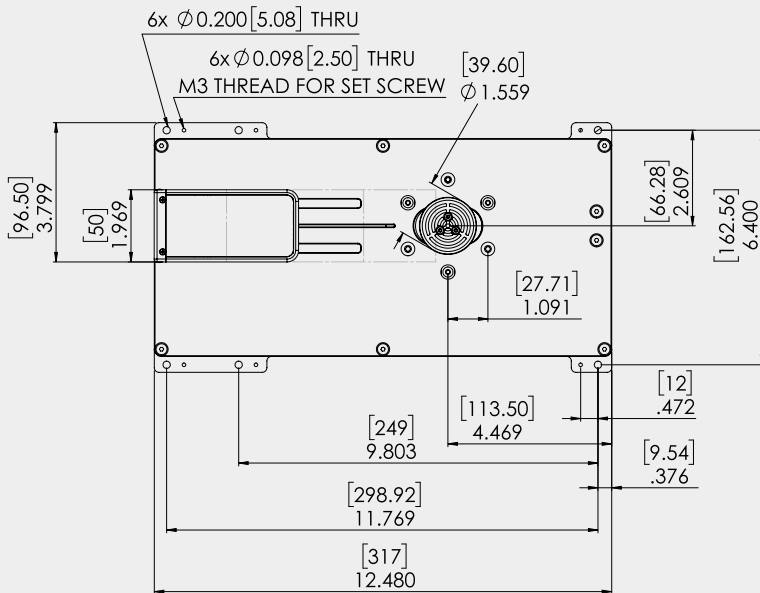
- Chuck and pins materials: Peek, Tekapeek ELS nano, Semitron ESD420, Viton, Kalrez, Ceramic, etc.
- Facilities Required: 100-240 VAC, 50-60Hz or 24 VDC|3A
- Minimum Vacuum: 70 kPa at 100 cc|sec. airflow
- Light source: Adaptive
- Host Communication: RS232 or Ethernet
- Cleanliness: ISO 3 (ISO14644) | Class 1 (FED STD 209E) Clean room compliant
- MTBF: >60 000 hours | >10 000 000 cycles
- Certification: TUV (IEC|UL61010-1)
- Compliance: SEMI S2, S8 and CE | UKCA compliant



Milara Smart Prealigner 3" - 12"



Part Number	3133-00000-00
Wafer Diameter	From 3" to 12"
Width	173 mm / 6.811"
Length	317 mm / 12.480"
Height	188.50 mm / 7.421"
Weight	7.420 kg

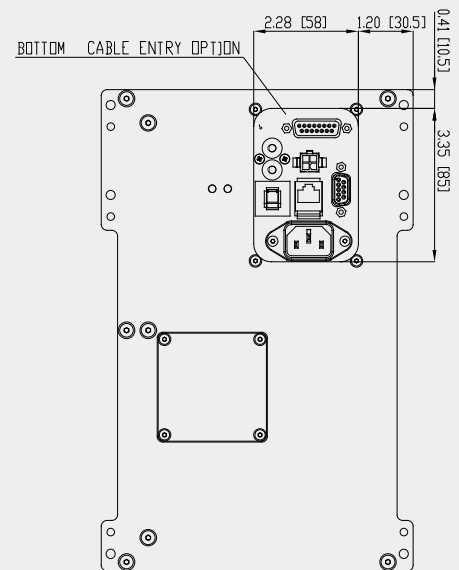
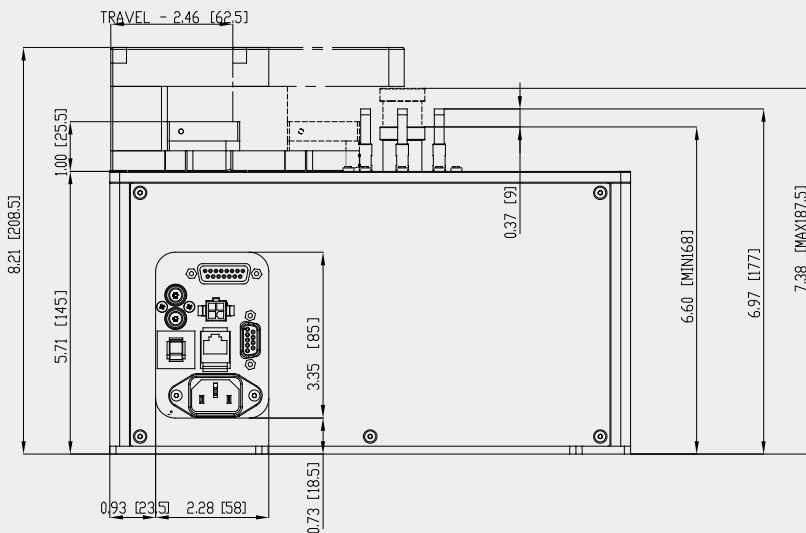
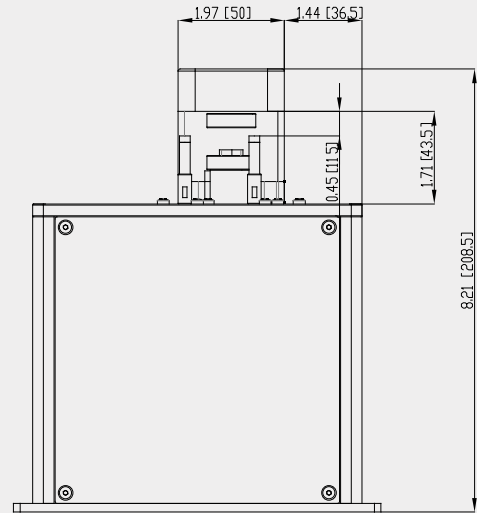
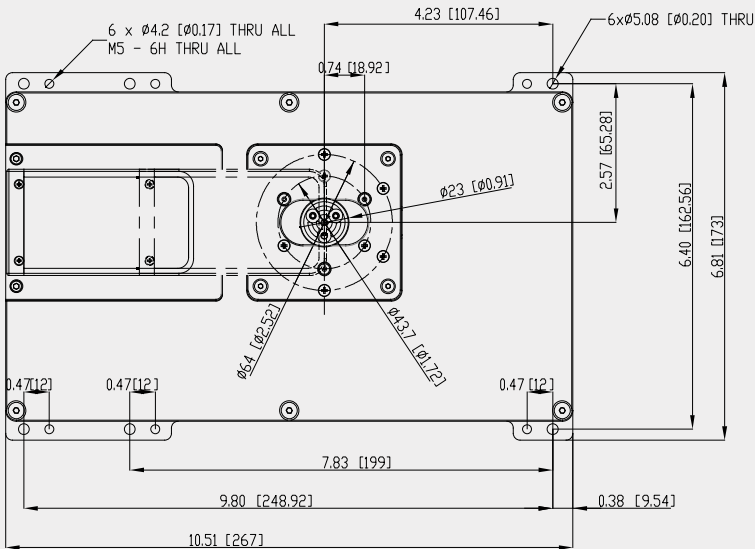


Unless otherwise specified all dimensions are in inch [mm]

Milara Smart Prealigner 2" - 8" Short Body

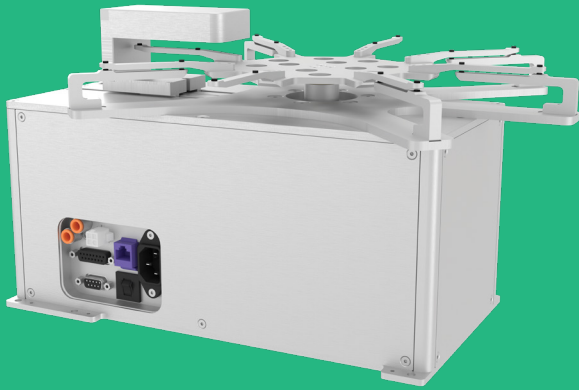


Part Number	3158-00000-00
Wafer Diameter	From 2" to 8"
Width	173 mm / 6.811"
Length	267 mm / 10.51"
Height	208.5 mm / 8.21"
Weight	6.750 kg

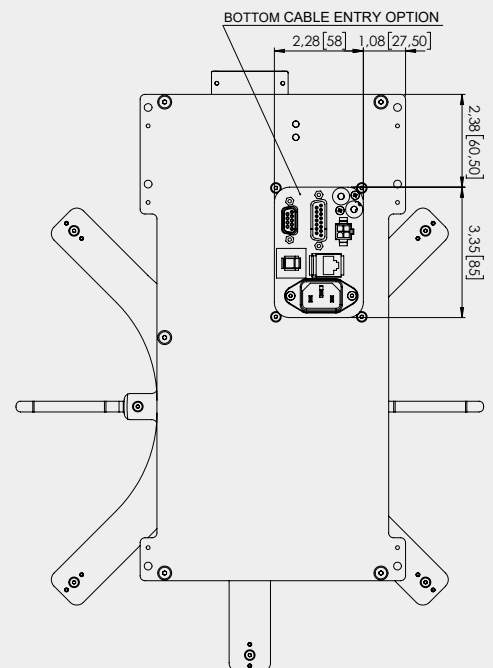
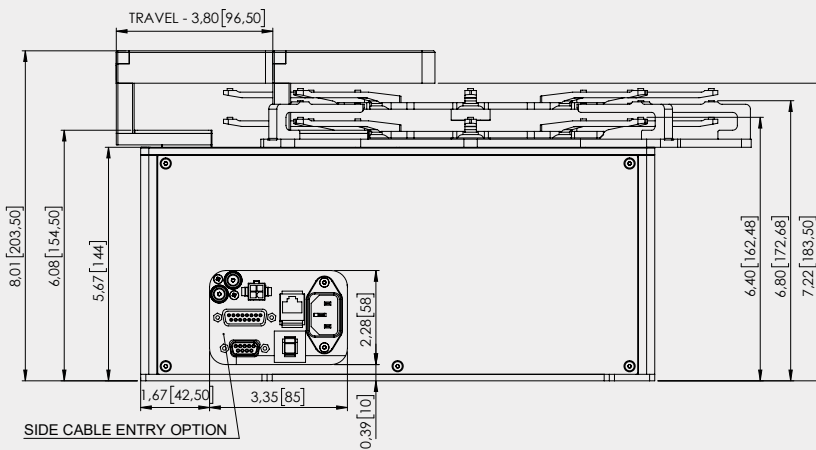
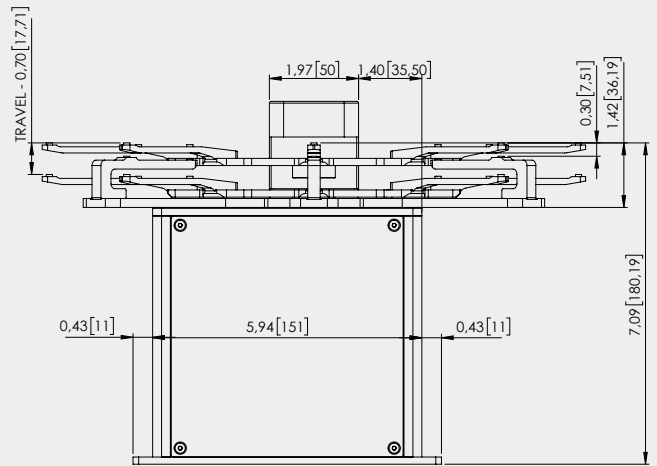
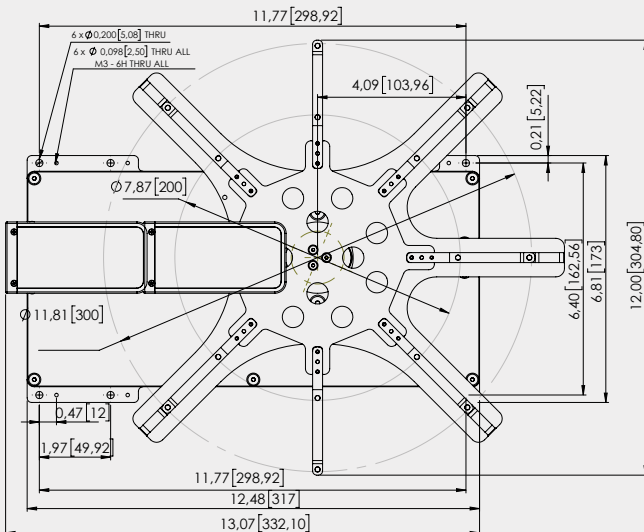


Unless otherwise specified all dimensions are in inch [mm]

Milara Smart Prealigner 8" - 12" Edge Grip

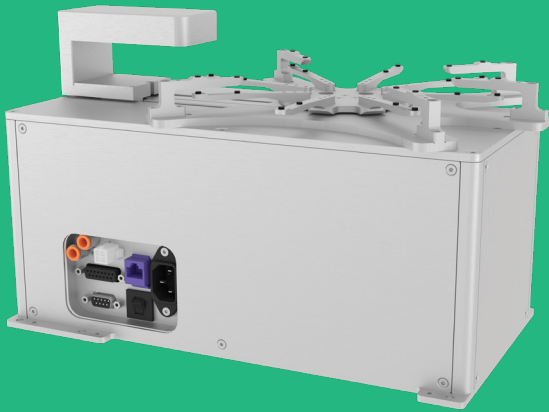


Part Number	3153-00000-00
Wafer Diameter	From 8" to 12"
Width	304.80 mm / 12"
Length	332.10 mm / 13.075"
Height	203.50 mm / 8.012"
Weight	7.785 kg

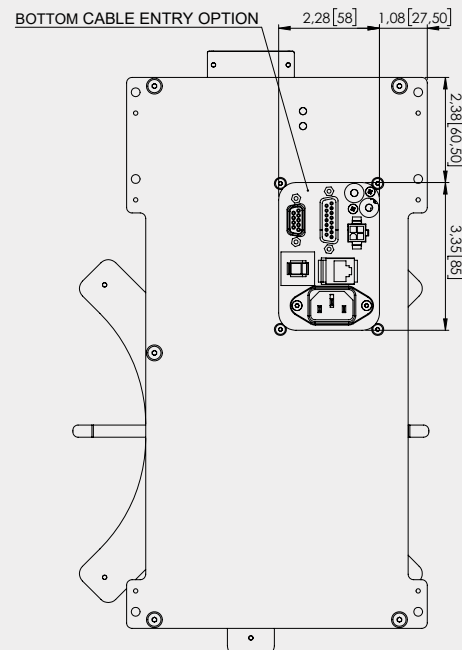
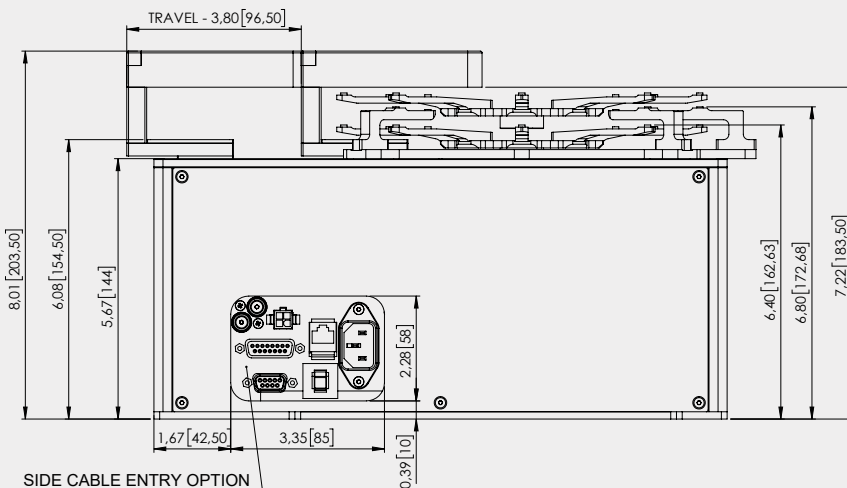
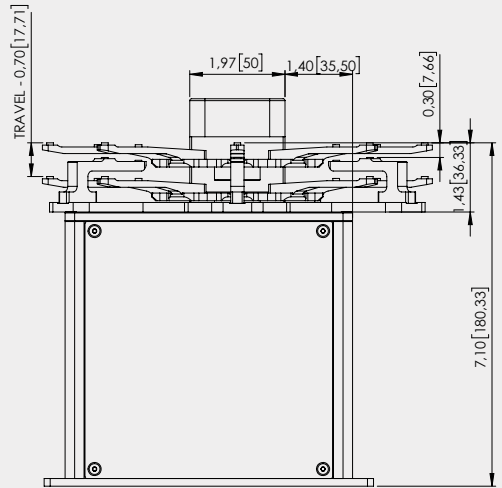
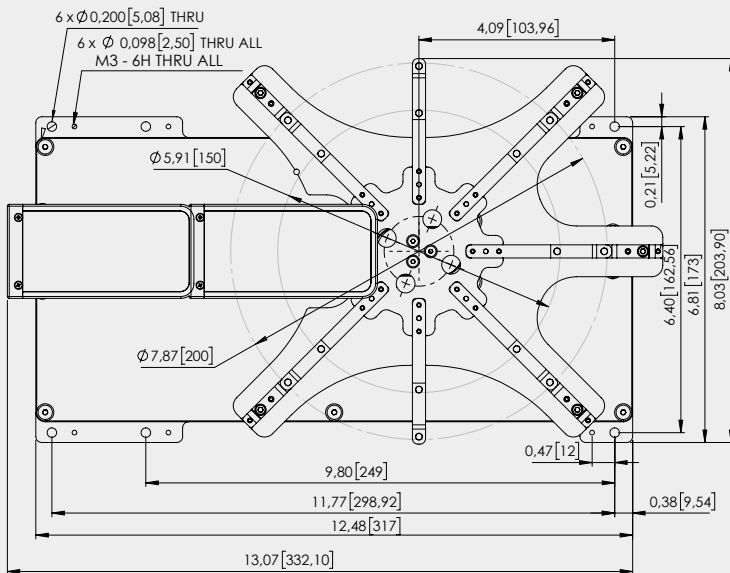


Unless otherwise specified all dimensions are in inch [mm]

Milara Smart Prealigner 6" - 8" Edge Grip



Part Number	3161-00000-00
Wafer Diameter	From 6" to 8"
Width	203.90 mm / 8.028"
Length	332.10 mm / 13.075"
Height	203.50 mm / 8.012"
Weight	7.685 kg



Unless otherwise specified all dimensions are in inch [mm]

PREALIGNER CONFIGURATION MATRIX

